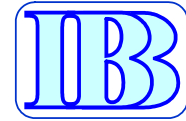


Rehabilitation, Strengthening, Modernizing and Equipping of Ecological Research Station SULINA

**(International Centre of Excellency
for Aquatic Biodiversity
in Sulina City)**

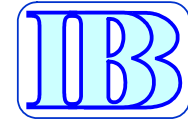


Ecological Research Station Sulina (Danube Delta)

In 1954, with the aim to support the hidrobiological research in the Danube Delta, the Romanian Academy decides to establish a field research station in Sulina. Located initially in the building of the Fluvial Administration of the Lower Danube, the station was moved later in nowadays location;

Nowadays, the station has laboratories, mini-library and conference hall, kitchen and can provide accommodation for up to 20 persons.





Biosphere Reserve – 1990

- World Natural Heritage List
- Ramsar Convention List
- UNESCO program Man and Biosphere

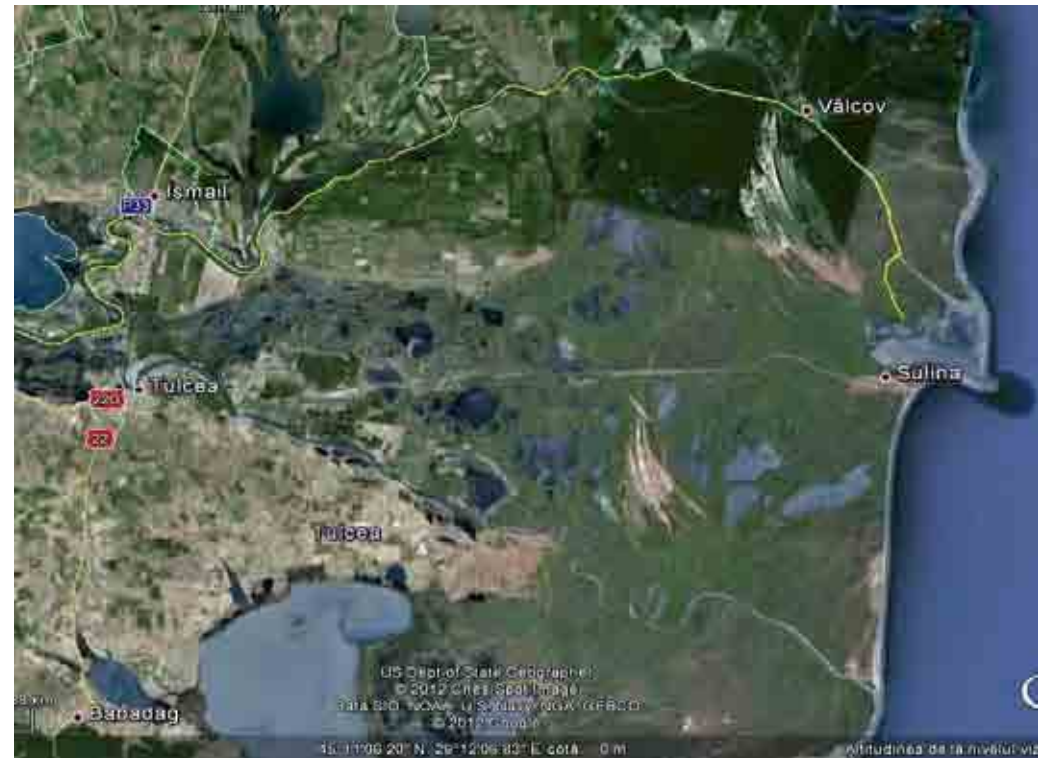
Danube Delta

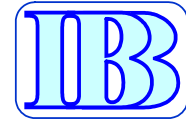
Inventory 1991 – 1997:

1615 plant species

3491 invertebrate and
vertebrate species

(Oosterberg et al, 2000)





Danube Delta - current status

- ▶ Anthropogenic impact – declining trend of biodiversity, reduced fishery resources
- ▶ Climate change – decline of river discharge and lakes depth
- ▶ River channelization – increased erosion and colmation of channels
- ▶ Tourism development – increasing pressures



→ management on scientific basis needed to harmonize the different uses



Centre of Excellency for Aquatic Biodiversity

The Centre aims to answer this challenge

Overall objective: foster the research of aquatic biodiversity for a sound scientific management of the Danube Delta Biosphere Reserve and design sustainable solutions for the development of the area by mitigating the impact of the current environmental threats.





Centre of Excellency for Aquatic Biodiversity

Aims:

- ▶ Enhance capabilities of the research teams to perform integrative, multidisciplinary studies in the Centre of Excellency Sulina
- ▶ Assess the major pressures on the aquatic ecosystems and identify efficient measures to mitigate their impact
- ▶ Initiate a dialogue with the local communities and raise public awareness regarding the role of environmental values for human society





Project key points

Existing infrastructure – Ecological Research Station Sulina

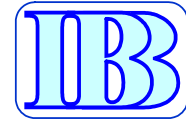
– includes labs + accommodation facilities

Existing expertise – Institute of Biology Bucharest + network institutes

Required:

- Modernization
- Equipment up-grade
- Small conference room





Project details

- ▶ Expected time frame: 2 years
- ▶ Estimated costs: 2.4 million euro
- ▶ Proposed either in the frame of the Danube Strategy or European Structural Funds in POS - CCE



Priority area: Environmental challenges
and emergency preparedness

Academia Romana
Institutul de Biologie Bucuresti



*THANK YOU FOR
YOUR ATTENTION*

madalin.enache@ibiol.ro